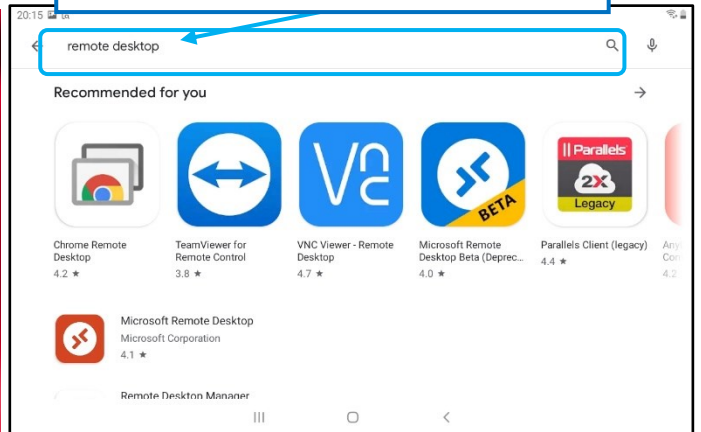


How to install and configure RemoteApps on Android devices

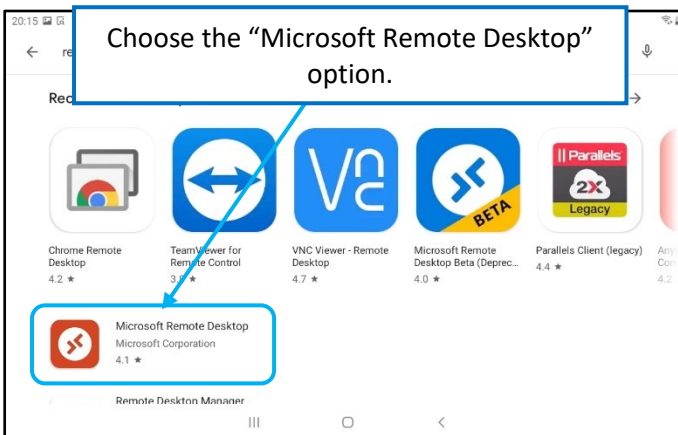
On an Android device open Play Store



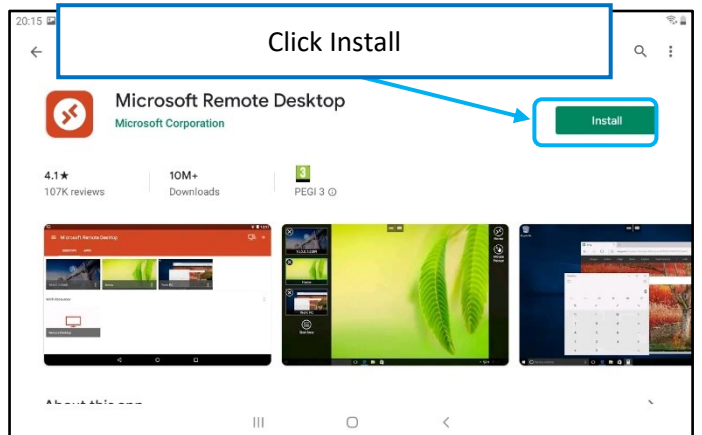
Type "Remote Desktop" in the search bar



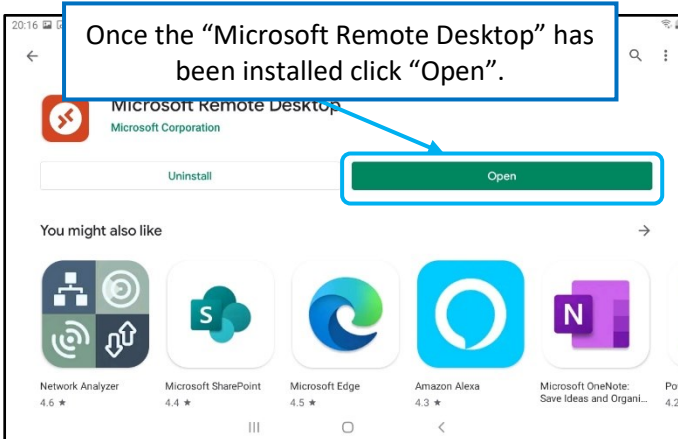
Choose the "Microsoft Remote Desktop" option.



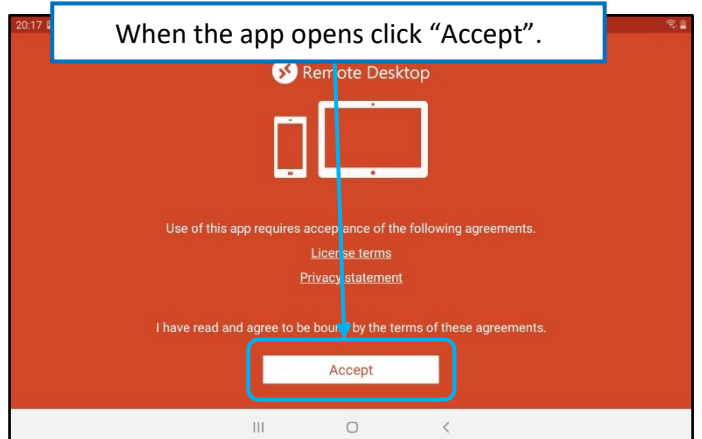
Click Install



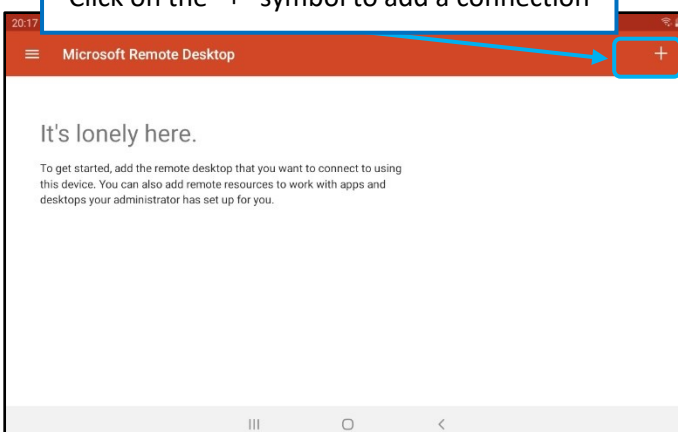
Once the "Microsoft Remote Desktop" has been installed click "Open".



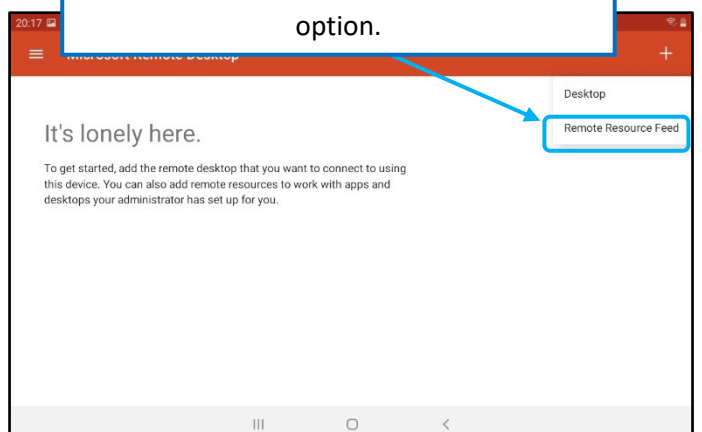
When the app opens click "Accept".



Click on the "+" symbol to add a connection

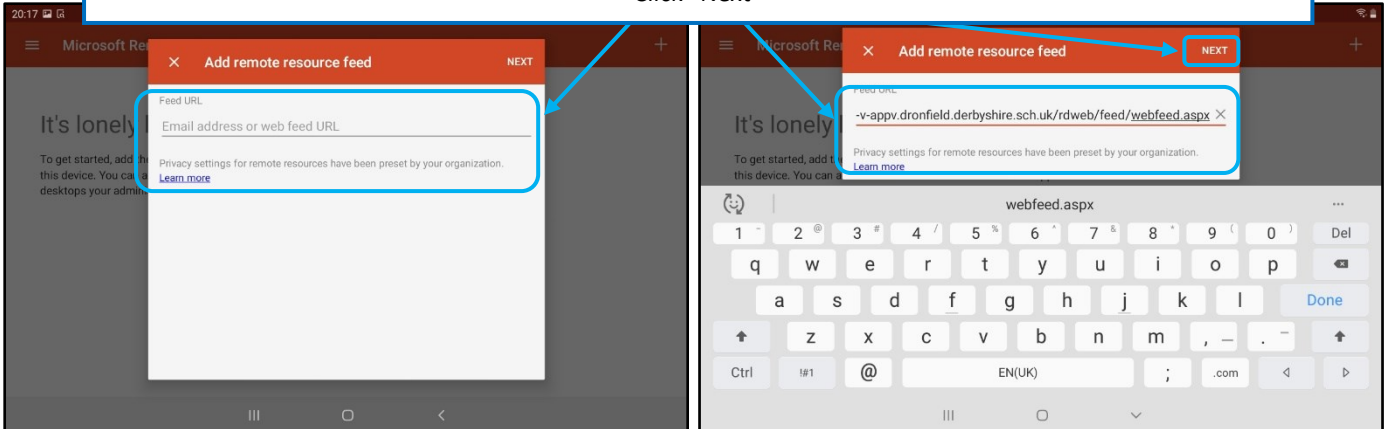


Choose the "Remote Resource Feed" option.



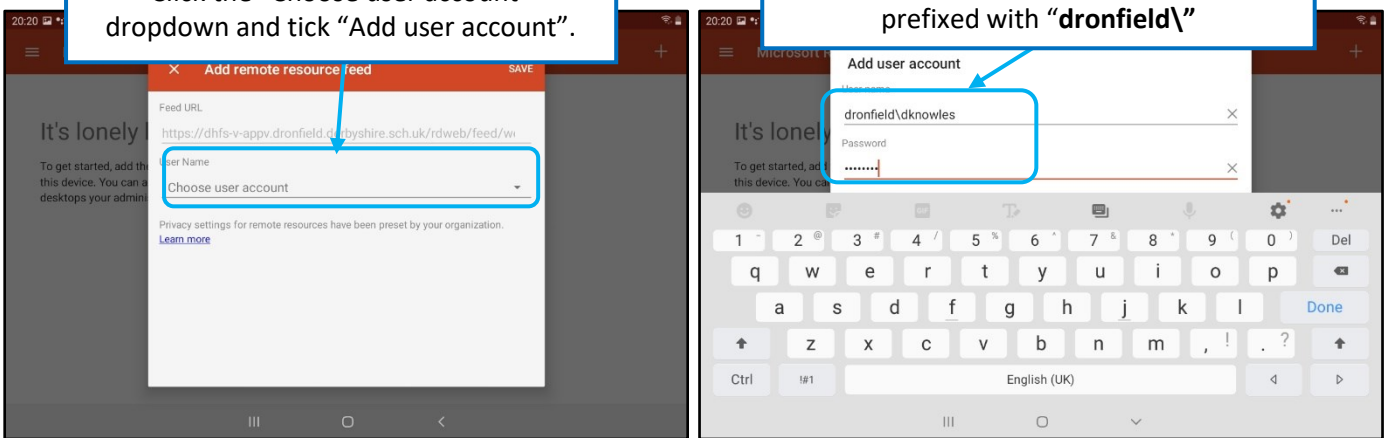
Enter the following address into the "Feed URL" option.
<https://dhfs-v-appv.dronfield.derbyshire.sch.uk/rdweb/Feed/webfeed.aspx>

Click "Next"

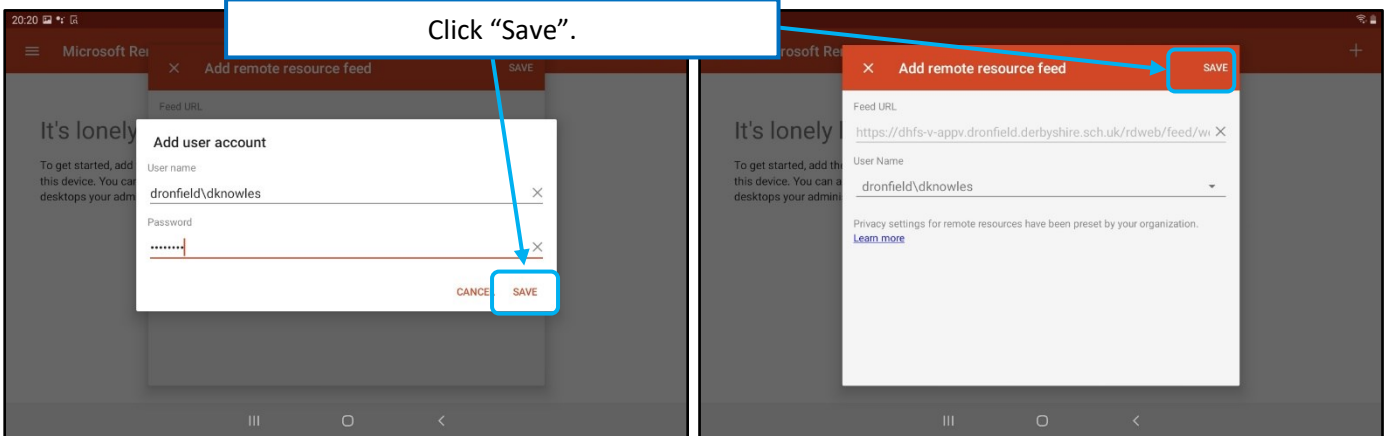


Click the "Choose user account" dropdown and tick "Add user account".

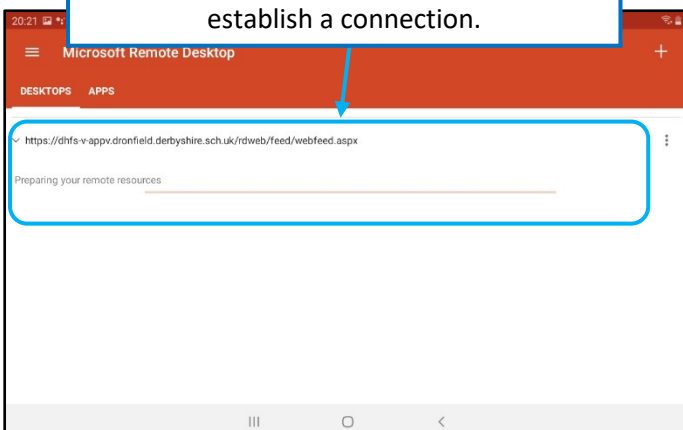
Enter your username and password prefixed with "dronfield\"



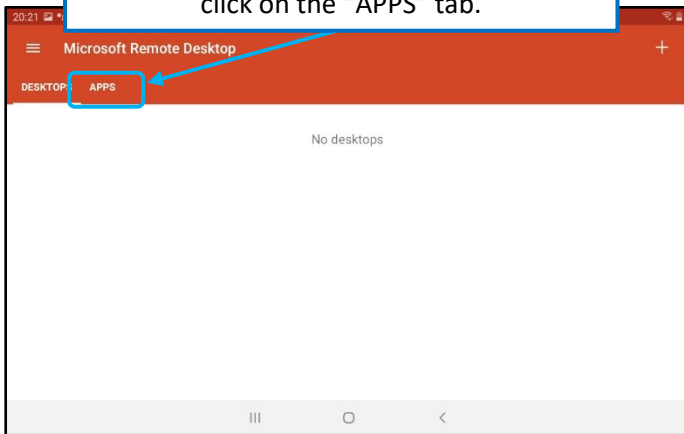
Click "Save".



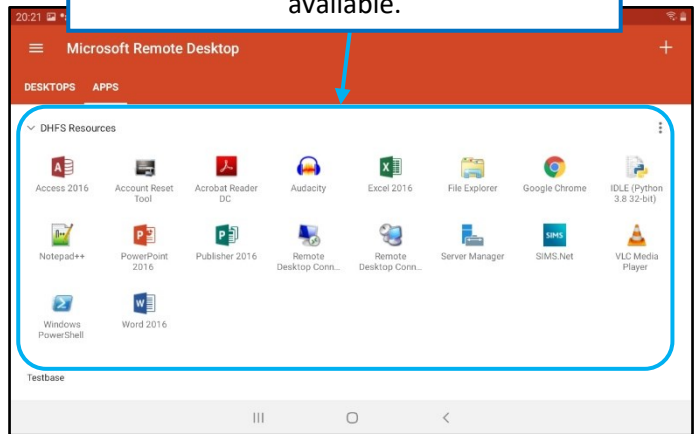
The Remote Desktop App will now look to establish a connection.



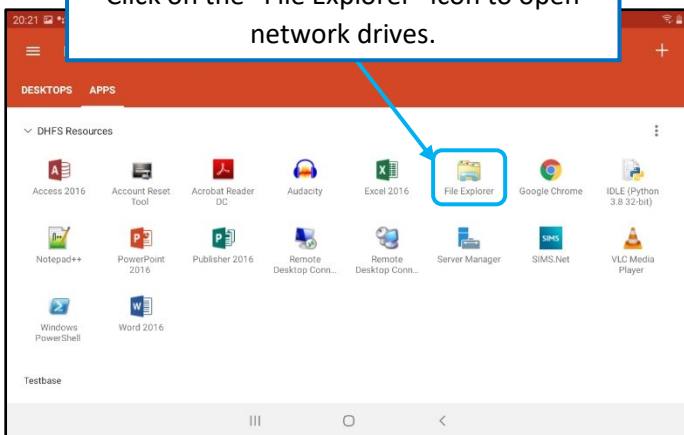
Once the connection has been established click on the "APPS" tab.



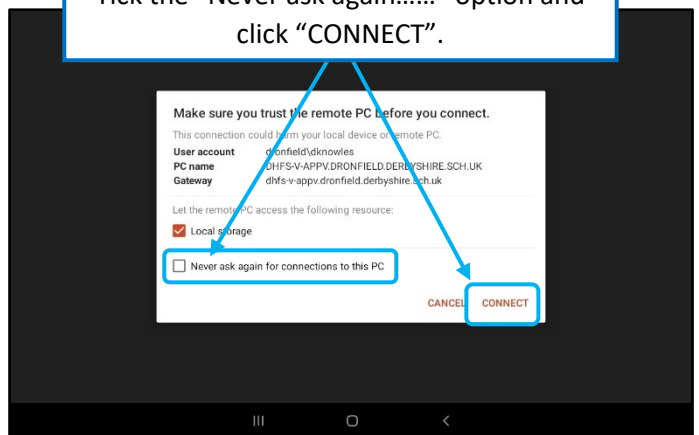
The Remote Desktop App's will now be available.



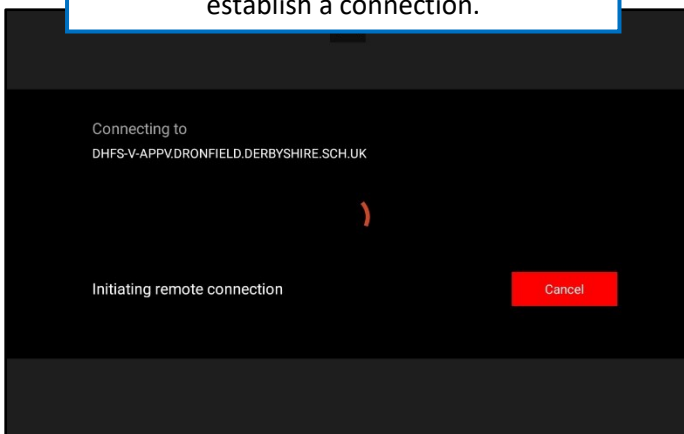
Click on the "File Explorer" icon to open network drives.



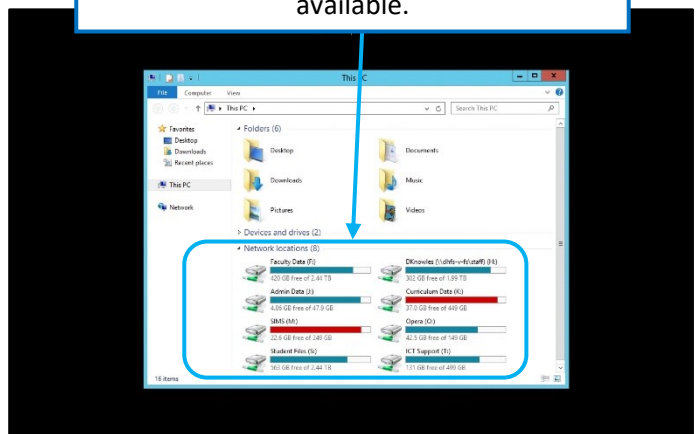
Tick the "Never ask again....." option and click "CONNECT".



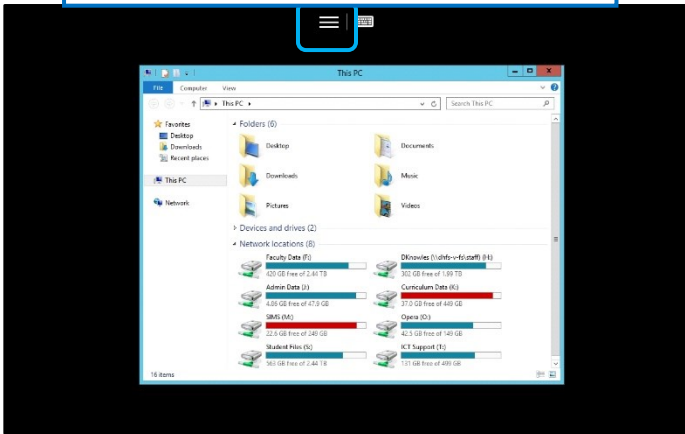
The Remote Desktop App will now look to establish a connection.



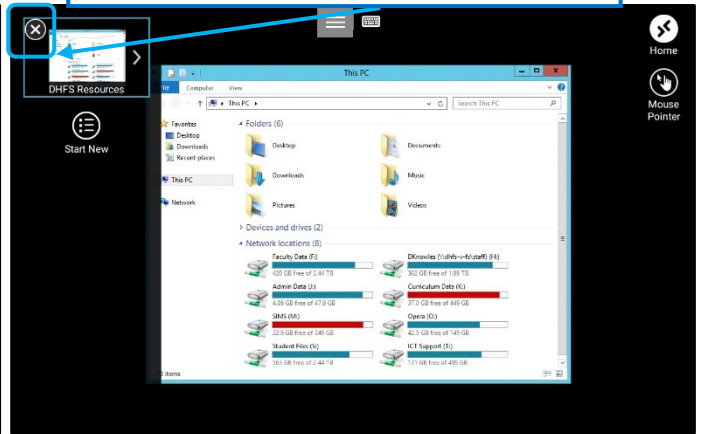
The "Network Drives" will now be available.



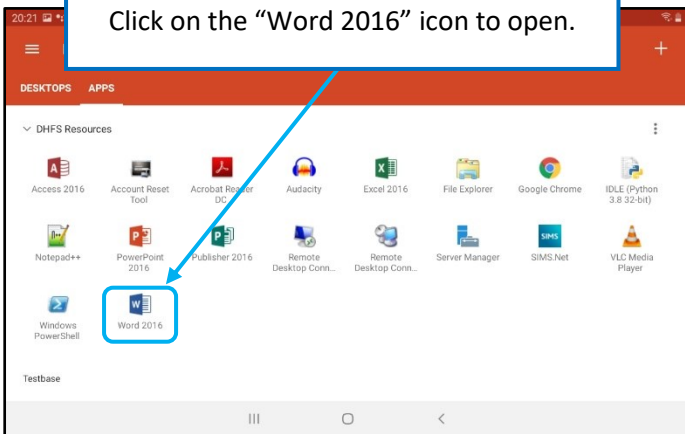
To close the "Network Drives" Click the symbol top centre .



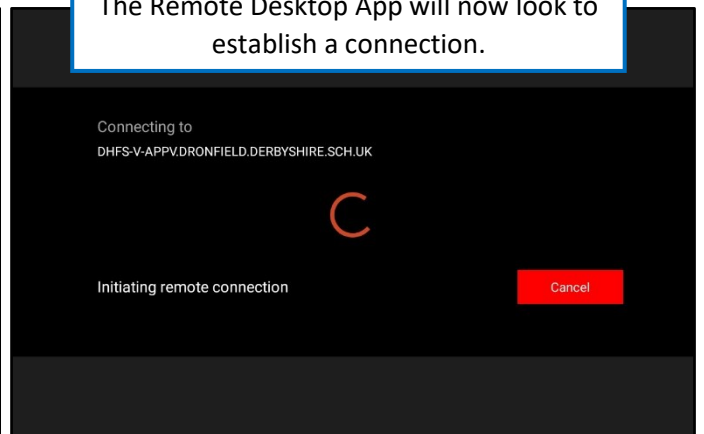
To close the "Network Drives" Click the "X" symbol top left .



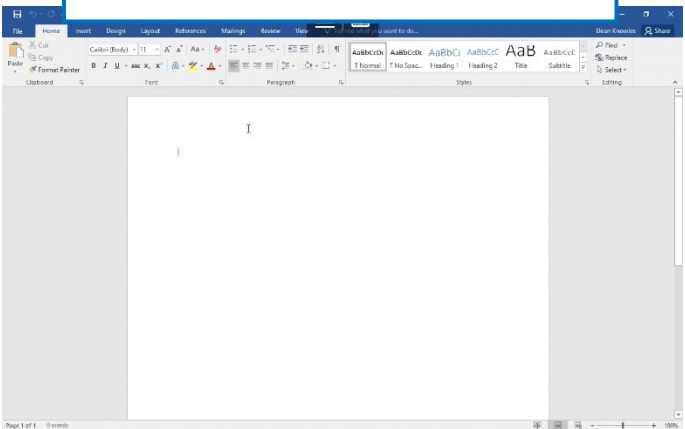
Click on the "Word 2016" icon to open.



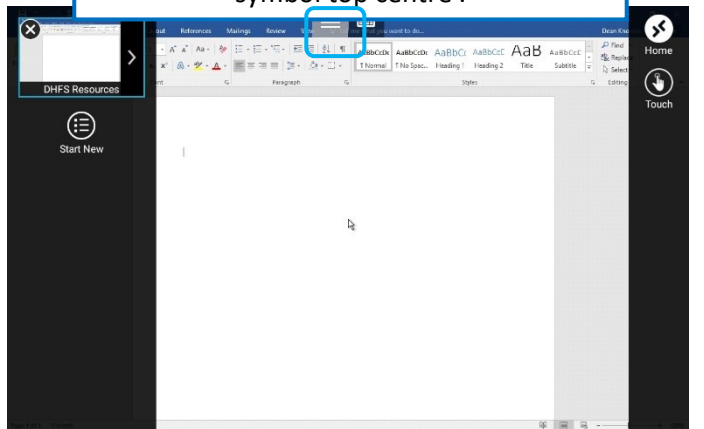
The Remote Desktop App will now look to establish a connection.



"Microsoft Word" will now open.



To close "Microsoft Word" Click the symbol top centre .



To close "Microsoft Word" Click the "X" symbol top left.

